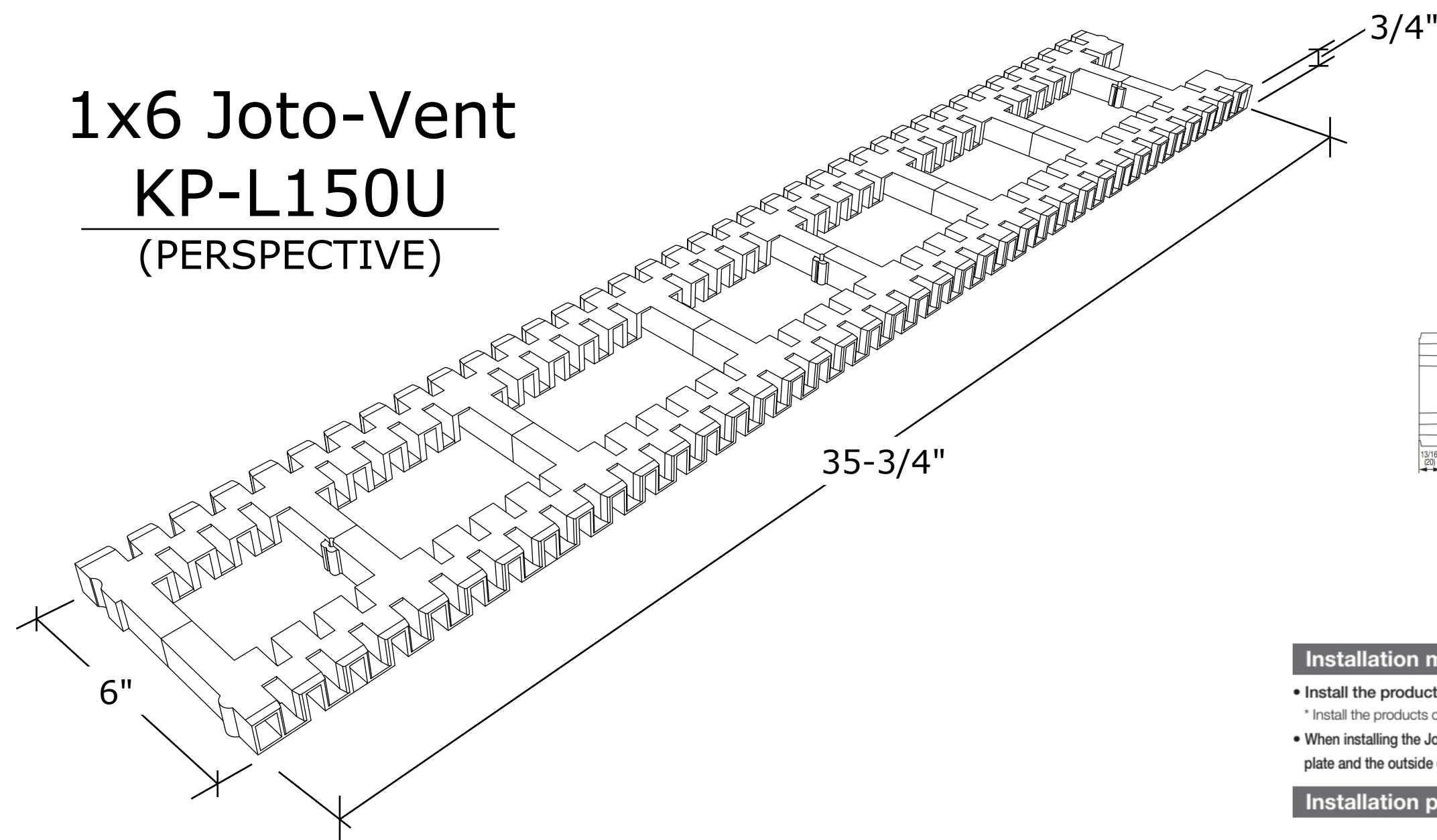


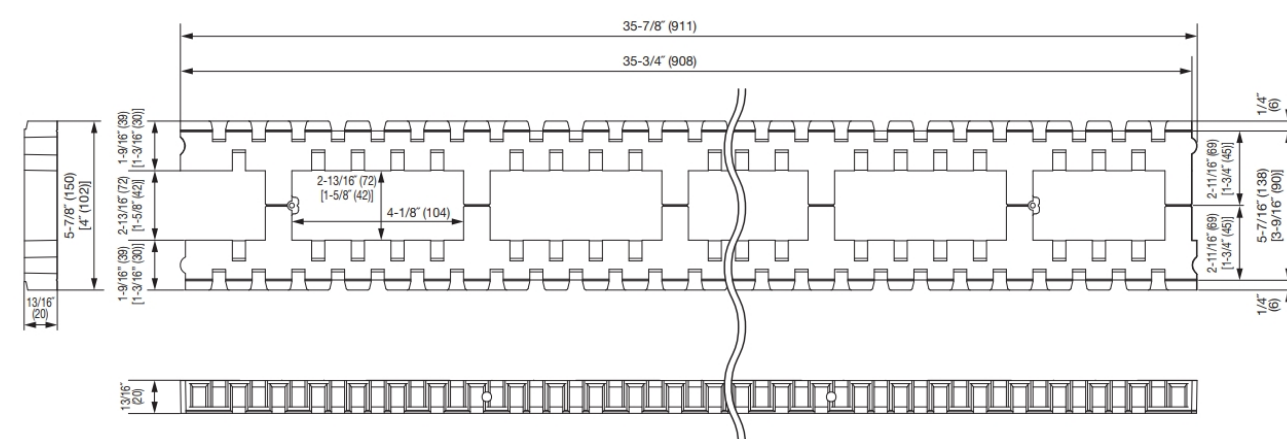
# 1x6 Joto-Vent KP-L150U (PERSPECTIVE)



## Specifications

Product Name	1x6 Joto-Vent
Product Number	KP-L150U
Dimensions	6" x 3" x 3/4"
Color	Black
Material	PC (Calcium-carbonate, Polyolefin recycled plastic composite)
Package	20 pieces/box

## Product Size



## Installation method

- Install the products by placing them closely, end to end, over the foundation that requires crawl space ventilation.
- \* Install the products over the entire foundation regardless of inside or outside, to keep the stud height uniform throughout the building.
- When installing the Joto-Vent, the sill plate will be centered on the Joto-Vent and aligned between the lines 1/4" (6mm) from each edge of the Joto-Vent. The sill plate and the outside of the foundation will be aligned which will have the Joto-Vent protrude 1/4" (6mm) past the edge of the foundation (See completion drawing).

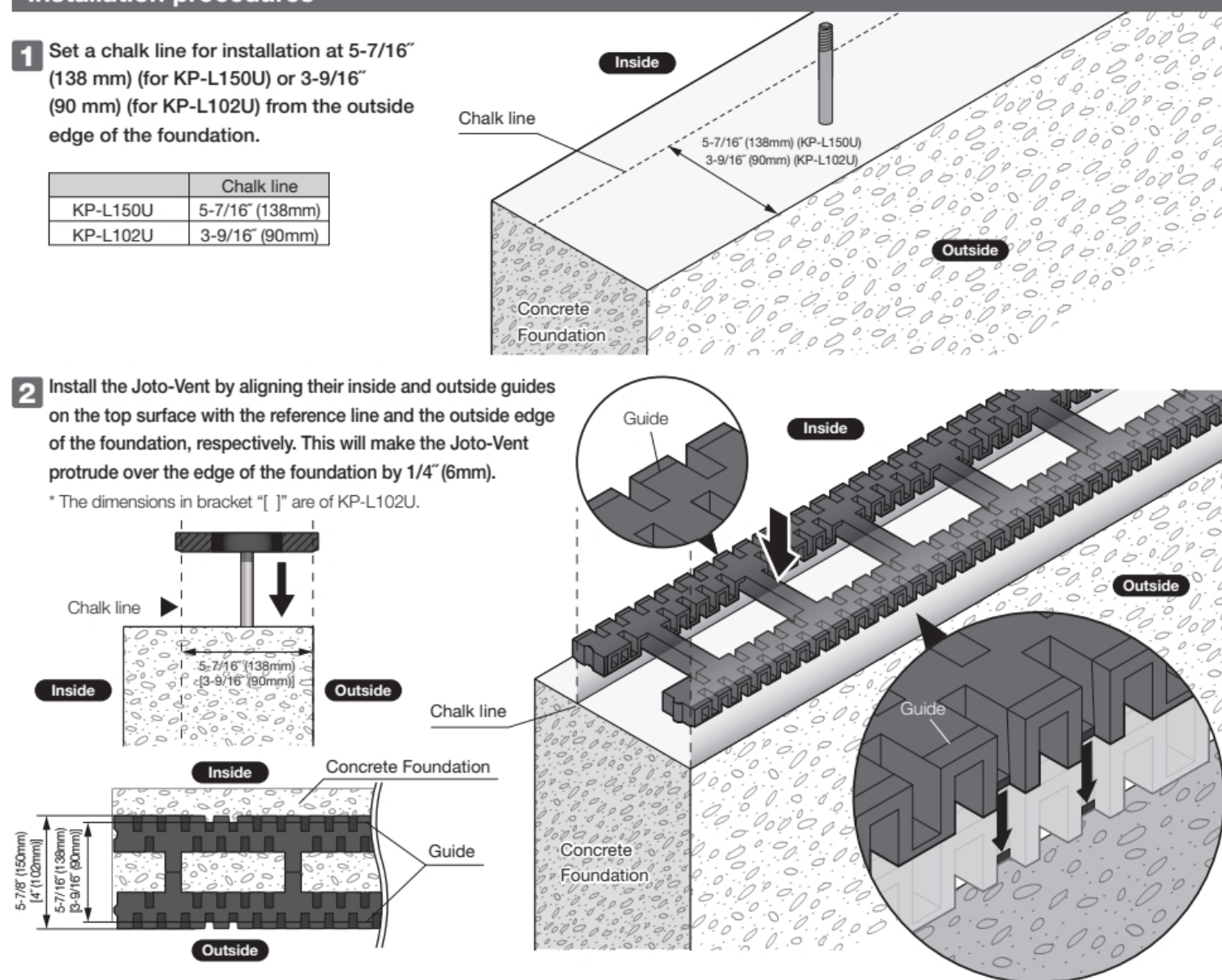
## Installation procedures


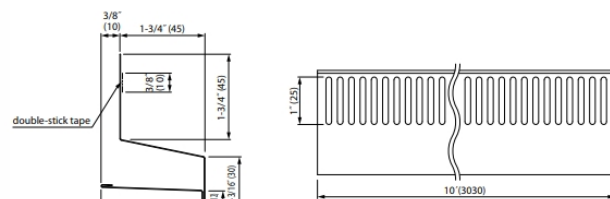

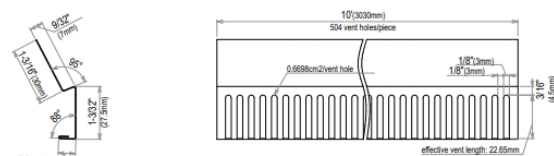

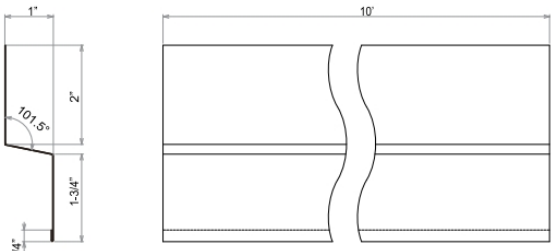
- 1 Set a chalk line for installation at 5-7/16" (138 mm) (for KP-L150U) or 3-9/16" (90 mm) (for KP-L102U) from the outside edge of the foundation.

	Chalk line
KP-L150U	5-7/16" (138mm)
KP-L102U	3-9/16" (90mm)

- 2 Install the Joto-Vent by aligning their inside and outside guides on the top surface with the reference line and the outside edge of the foundation, respectively. This will make the Joto-Vent protrude over the edge of the foundation by 1/4" (6mm).

\* The dimensions in bracket "[]" are of KP-L102U.



		<table><tr><td>Product Name</td><td>Architectural Covering</td></tr><tr><td>Product Number</td><td>WACF-U45-WT/BK</td></tr><tr><td>Dimensions</td><td>1-3/4" x 10"</td></tr><tr><td>Color</td><td>White/Black</td></tr><tr><td>Material</td><td>28-gauge galvanized steel (colored galvalume)</td></tr><tr><td>Package</td><td>10 pieces/box</td></tr><tr><td>Min. Ventilation Opening</td><td>1/8 inch</td></tr></table>	Product Name	Architectural Covering	Product Number	WACF-U45-WT/BK	Dimensions	1-3/4" x 10"	Color	White/Black	Material	28-gauge galvanized steel (colored galvalume)	Package	10 pieces/box	Min. Ventilation Opening	1/8 inch
Product Name	Architectural Covering															
Product Number	WACF-U45-WT/BK															
Dimensions	1-3/4" x 10"															
Color	White/Black															
Material	28-gauge galvanized steel (colored galvalume)															
Package	10 pieces/box															
Min. Ventilation Opening	1/8 inch															
		<table><tr><td>Product Name</td><td>Insect Prevention Strip</td></tr><tr><td>Product Number</td><td>KIP-1-10</td></tr><tr><td>Dimensions</td><td>10"</td></tr><tr><td>Color</td><td>Black</td></tr><tr><td>Material</td><td>28-gauge galvanized steel (colored galvalume)</td></tr><tr><td>Package</td><td>10 pieces/box</td></tr><tr><td>Min. Ventilation Opening</td><td>1/8 inch</td></tr></table>	Product Name	Insect Prevention Strip	Product Number	KIP-1-10	Dimensions	10"	Color	Black	Material	28-gauge galvanized steel (colored galvalume)	Package	10 pieces/box	Min. Ventilation Opening	1/8 inch
Product Name	Insect Prevention Strip															
Product Number	KIP-1-10															
Dimensions	10"															
Color	Black															
Material	28-gauge galvanized steel (colored galvalume)															
Package	10 pieces/box															
Min. Ventilation Opening	1/8 inch															
		<table><tr><td>Product Name</td><td>Z-Covering</td></tr><tr><td>Product Number</td><td>EAC-0-10-WT/BK</td></tr><tr><td>Dimensions</td><td>10"</td></tr><tr><td>Color</td><td>White/Black</td></tr><tr><td>Material</td><td>28-gauge galvanized steel (colored galvalume)</td></tr><tr><td>Package</td><td>10 pieces/box</td></tr></table>	Product Name	Z-Covering	Product Number	EAC-0-10-WT/BK	Dimensions	10"	Color	White/Black	Material	28-gauge galvanized steel (colored galvalume)	Package	10 pieces/box		
Product Name	Z-Covering															
Product Number	EAC-0-10-WT/BK															
Dimensions	10"															
Color	White/Black															
Material	28-gauge galvanized steel (colored galvalume)															
Package	10 pieces/box															

## ICC-ES Evaluation Report ESR-4161 \*

### 1.0 EVALUATION SCOPE

#### Compliance with the following codes:

- 2021, 2018 and 2015 International Building Code (IBC)
- 2021, 2018 and 2015 International Residential Code (IRC)

#### Properties Evaluated:

- Ventilation (Under-floor Space)
- Structural

### 2.0 USES

The Joto-Vent System is used to provide under-floor space continuous perimeter ventilation in accordance with IRC Section R408 and IBC Section 1202.4 [2015 IBC Section 1203.4]

### 4.0 DESIGN AND INSTALLATION

#### 4.1 Design:

Each model of the Joto-Vent and Airtight Joto-Vent described in this report provides an allowable bearing area as noted in Table 1. Due to the reduced bearing area, floor spans and roof spans must be reduced by the percentage noted in Table 2 for prescriptive applications under the IRC. For engineered systems, the reduced bearing area under the sill plate must be taken into account. The maximum allowable load on the Joto-Vent system is as noted in Table 2.

#### 4.2 Installation

The Joto-Vent System must be installed in accordance with this report and the manufacturer's published installation instructions. A copy of the manufacturer's published installation instructions must be available on the jobsite at all times during installation. The Joto-Vent is installed between the top of the foundation wall and the bottom of the sill plate (as shown). If needed, Joto-Vent Shim Plates can be installed between the foundation wall or sill plate and the Joto-Vent to provide level adjustment. For installations in accordance with the prescriptive provisions of the code, anchor bolts must be spaced as defined in Table 4.

TABLE 1- JOTO-VENT SYSTEM MODELS AND DIMENSIONAL PROPERTIES

JOTO-VENT SYSTEM COMPONENT	PRODUCT NAME	THICKNESS (in)	WIDTH (in)	LENGTH (ft)	CONTACT AREA (in <sup>2</sup> /ft)	WEB AREA (in <sup>2</sup> /ft)	VENTILATION AREA
Joto-Vent	KP-L150U	.79	6.0	3.0	26.34	11.84	4.81
Airtight Joto-Vent	KPK-N140U	.79	5.5	3.0	36.98	10.41	N/A

TABLE 2- JOTO-VENT SYSTEM DESIGN PROPERTIES

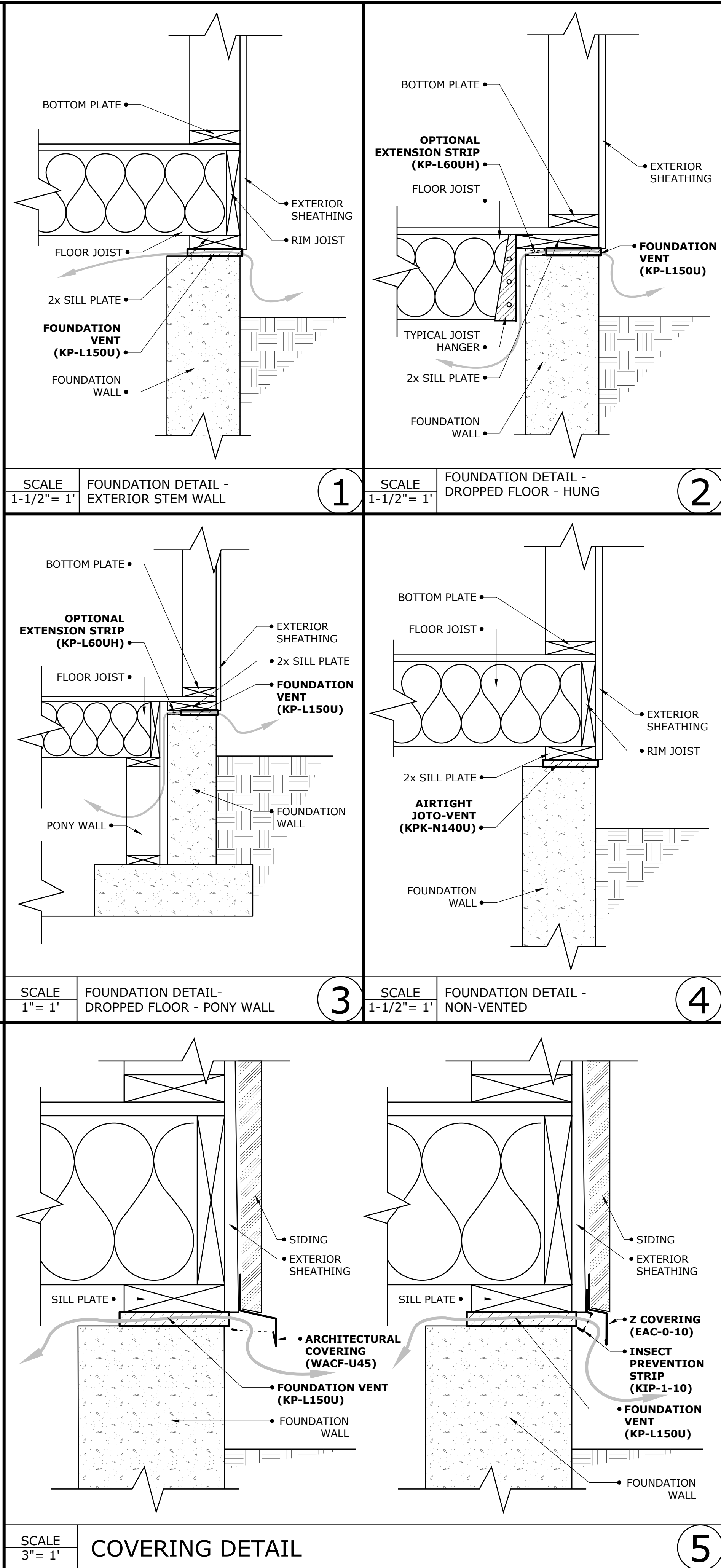
JOTO-VENT SYSTEM COMPONENT	PRODUCT NAME	REDUCTION FACTOR (%)	MAXIMUM ALLOWABLE LOAD (psi)	MAXIMUM ALLOWABLE LOAD (plf)
Joto-Vent	KP-L150U	60	279	7140
Airtight Joto-Vent	KPK-N140U	44	235	8703

TABLE 4- MAXIMUM CENTER TO CENTER SPACING OF ANCHOR BOLTS

Anchor Bolt Size (inches)		1x6" Joto Vent	
		Case 1	Case 2
	1/2	4'-0"	2'-8"
	5/8	6'-0"	4'-0"
	3/4	6'-0"	4'-0"

**Case 1 - For installation in accordance with the prescriptive provisions of the code.**  
**Case 2 - For structures subject to the IBC, anchor bolts in sill plates of braced wall lines in structures over two stories above grade.**

\* For more information, please refer to: [www.icc-es.org](http://www.icc-es.org)  
\*\* CBC/IRC Supplement is also available.



## Joto-Vent System®

17530 NE Union Hill Rd Suite 240  
Redmond, WA 98052

Tel: 425-256-2210

Fax: 425-522-4804

Online: [joto-vent.com](http://joto-vent.com)

Email: [info@jotovent.com](mailto:info@jotovent.com)

# 1x6 Joto-Vent (KP-L150U)

ISSUE DATE: 12/19/23

SHEET SIZE: 24"x36"