

Installation Manual

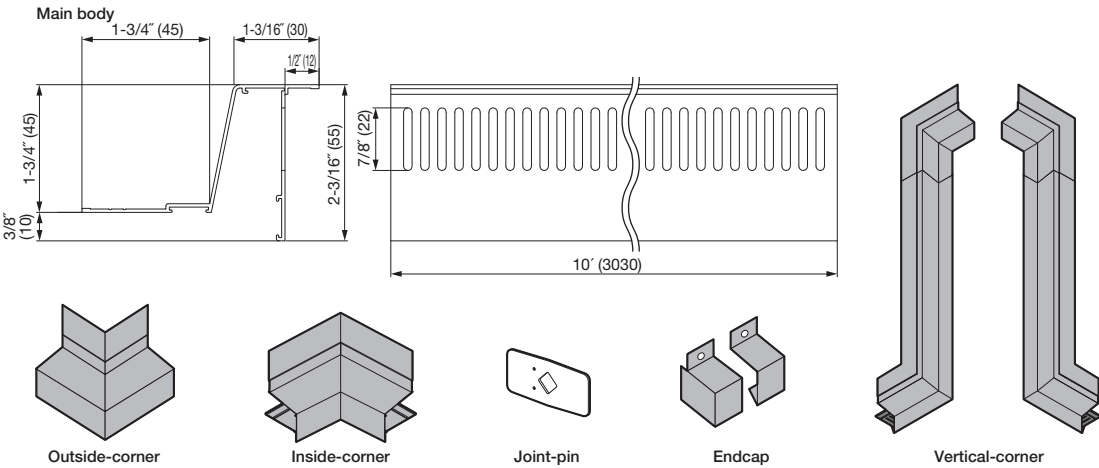
for Joto-Vent Premium-covering

Joto-Vent System®
Foundation Vent System

*Before installing the products, read this Installation Manual carefully in order to install them properly.

Table of Joto-Vent Premium-covering members

Packing contents		
Product No.	Remarks	Package
WPCA-U45	Main body 10 ft. in length	10pieces/box
WPCA-U45CO	Outside-corner	5pieces/box
WPCA-U45CI	Inside-corner	5pieces/box
WPCA-U45JP	Joint-pin	4pieces/bag (10bags/box)
WPCA-U45EC	Endcap	5sets/box
WPCA-U45VC (R/L)	Vertical-corner (Right/Left)	10sets/box



Joto-Vent System USA, Inc.
17530 NE Union Hill Rd Suite 240, Redmond, WA 98052
Tel: (425)-256-2210 Fax: (425)-522-4804
URL: <https://joto-vent.com>

Ver1.0 JA20SK

Manufactured by
JOTO TECHNO Co.,Ltd.

JOTO TECHNO Co.,Ltd.

Installation procedures

Install the Premium-covering per the following instructions and illustrations.

WARNING

- Wear appropriate protective gear such as gloves, hard hats, and protective glasses while at work. Use appropriate cutting tools. Never use inappropriate tools for cutting purpose such as sander to cut by friction. Properly handle the tools per their manufacturers' operations manual.
- Provide necessary personnel and equipment to ensure safety transportation of the products. In particular, a lengthy items must be carried by an appropriate number of people. If it must be carried by one person, keep it in balance by holding at the center point. Not doing so may lead to personal injury or property damages.
- Do not throw or drop the products. Do not step on the products or put anything on them. Doing so may lead to personal injury or property damages.
- Be careful about sharp corners and edges of the products. In particular, be careful not to cut your hand or other body parts with a sharp edge of the products once it has been cut to length.
- Never burn, eat, or let children play with the products. Doing so may lead to serious accidents.

CAUTION

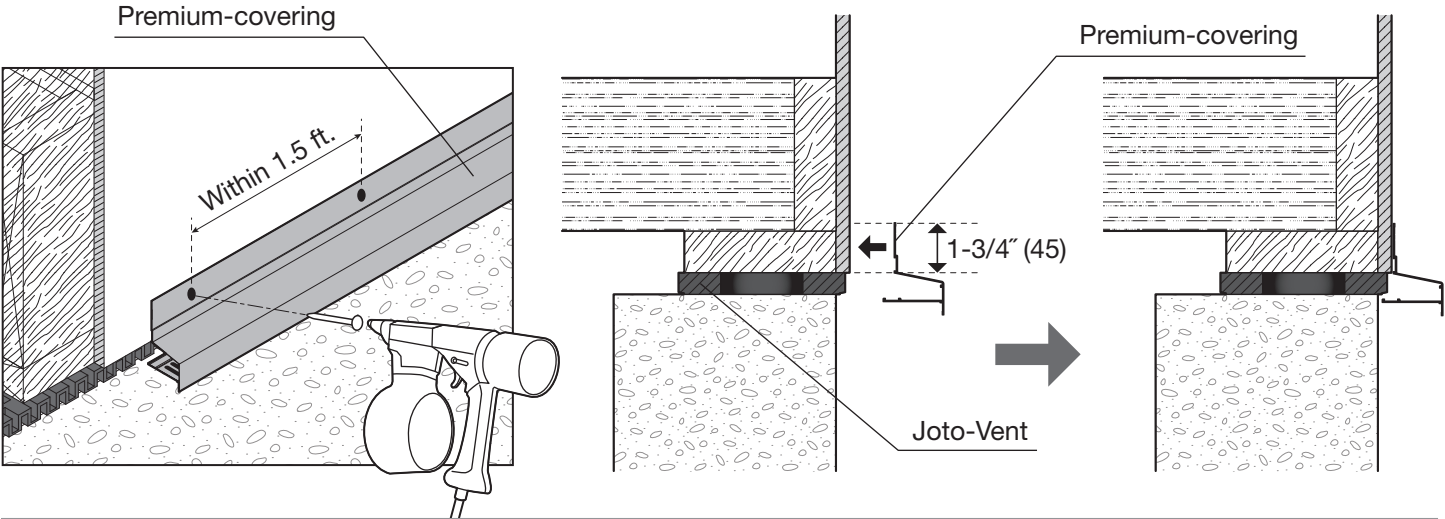
- Avoid storage under very high or very low temperatures. Do not store the products outdoors. Do not keep the products upright. Doing so may lead to deformation of the products.
- Store the products on a flat surface.
- Never draw out the products from a small opening of a package. Doing so may damage the products.
- Do not block the ventilating holes when you paint the products. Doing so may impair the ventilation performance.
- Avoid using in contact with chemical-treated woods, CCA containing copper, lead, etc. and fire-retardant timbers when using the products, as there is a chance of corrosion when in contact with these types of treated woods. Also, avoid joining the products with fittings or accessories using dissimilar metals such as copper, lead, and alloys.
- Do not use the products at coastal areas (potential damage by seawater) or dense fog-prone areas. This product is a painted aluminium, however extreme salty costal air can cause corrosion.
- Drip water caused by exhaust fumes from car or chimney may peel off the paint and coating.

NOTICE

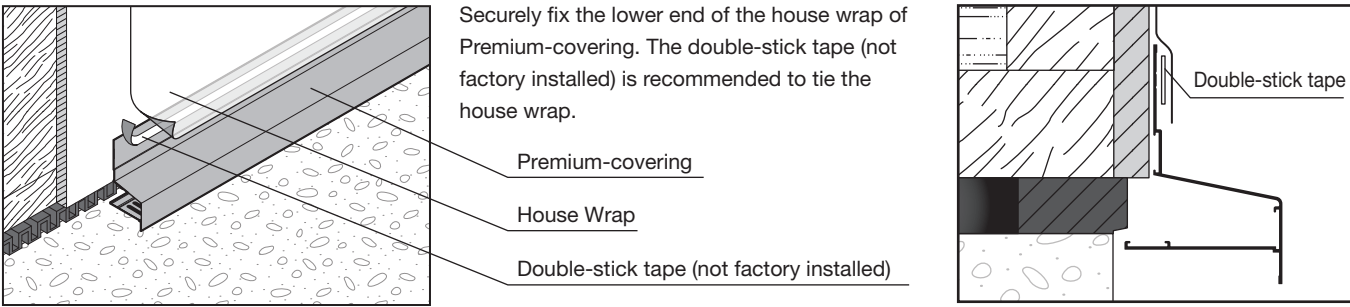
Use stainless-steel nails to install the Premium-covering.
Remove plastic film protective sheets on the Premium-covering immediately after installation.
Premium-covering products do NOT come with the double-stick tape included.

Combination of Joto-Vent and Premium-covering

Install the Premium-covering by using stainless-steel nails, at an interval of 1.5 ft., over OSB or plywood (outside). The installation should be made at the position where the top of the Premium-covering comes at 1-3/4 inch (45 mm) above the top surface of the Joto-Vent.



NOTICE



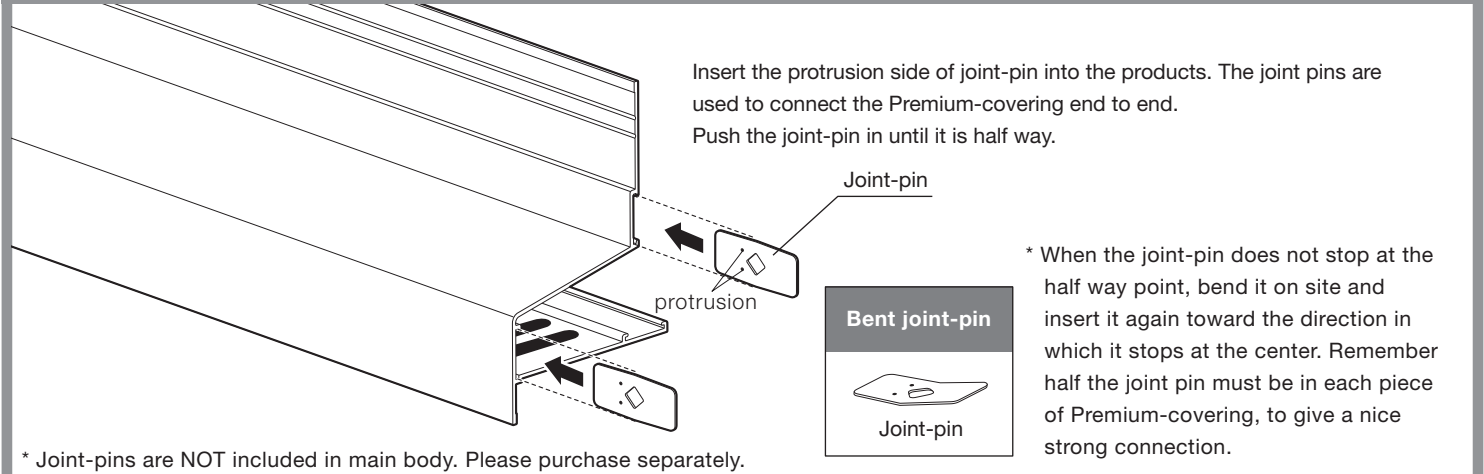
Accessories

Optional materials must be selected from our specified products.
Refer to CAUTION and NOTICE for handling precautions.

CAUTION

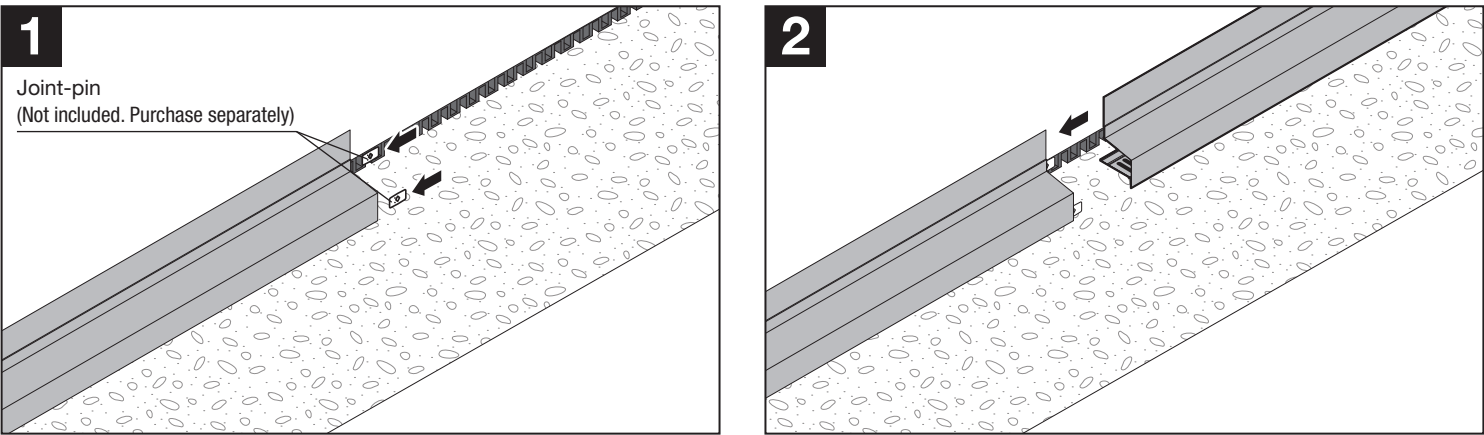
Please note this premium covering installs end-to-end connection instead of over-lapping connection.

NOTICE

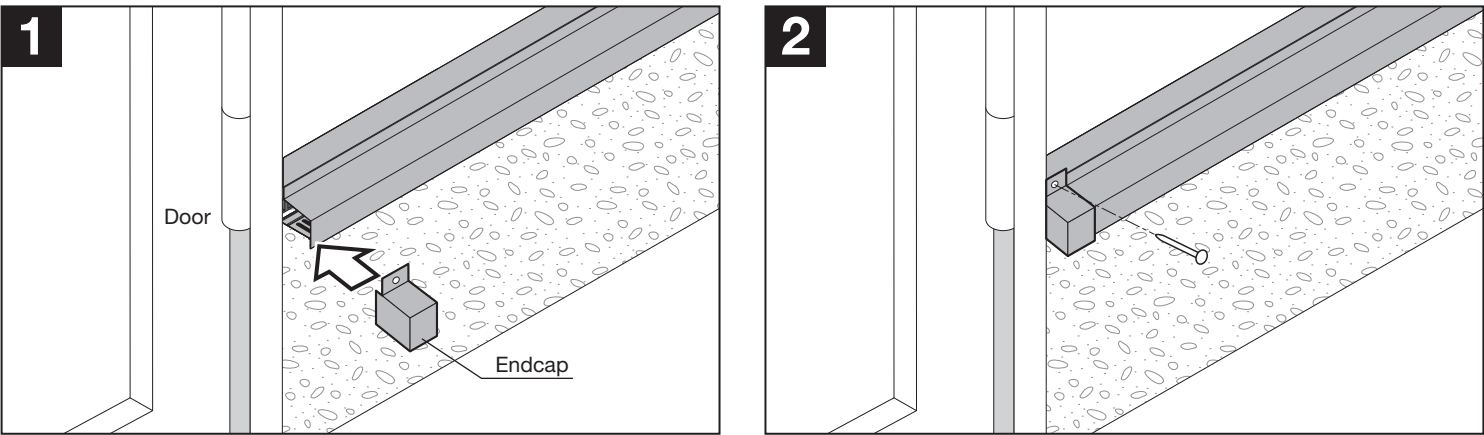


* Joint-pins are NOT included in main body. Please purchase separately.

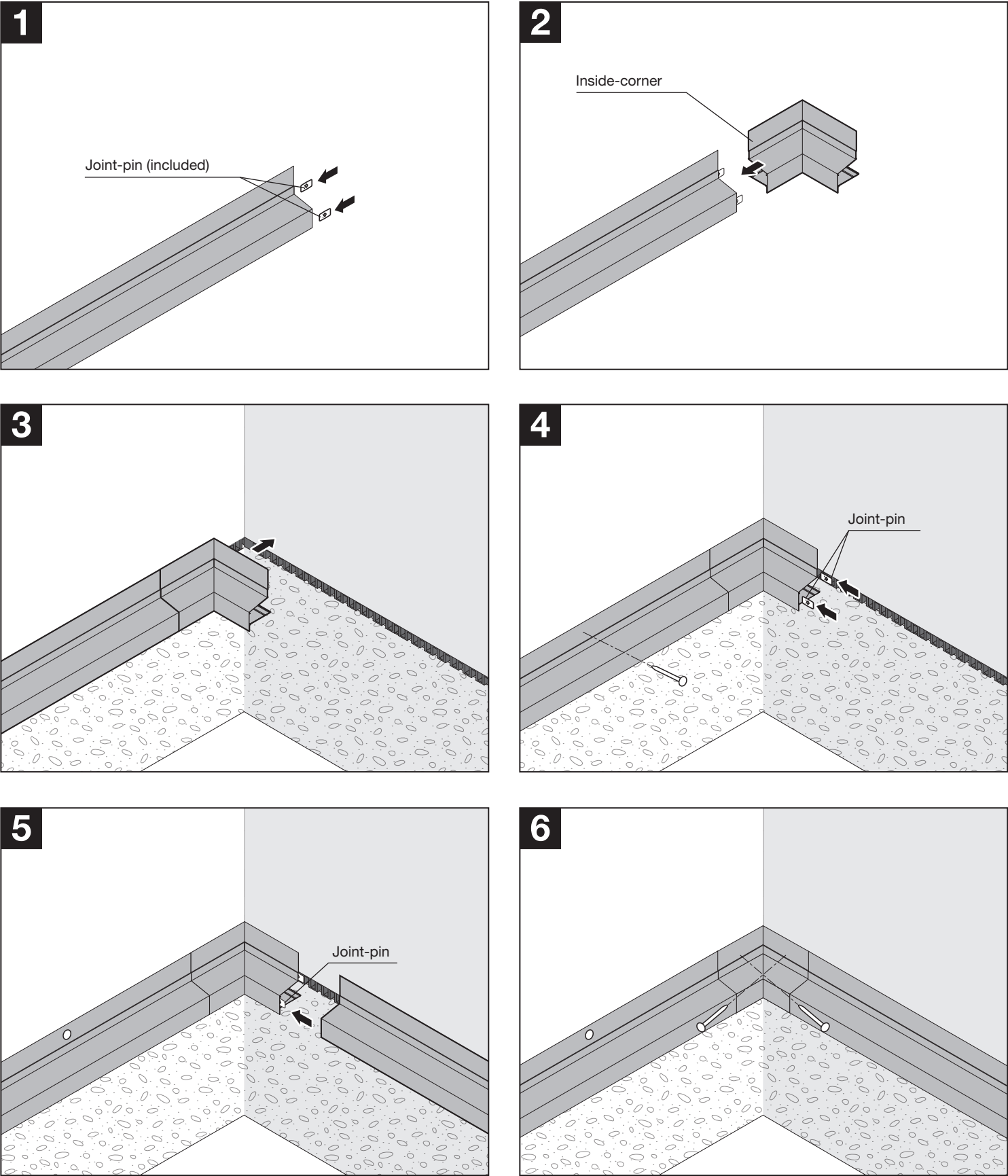
Joint-pin: install by connecting joint-pins as shown in the illustrations.



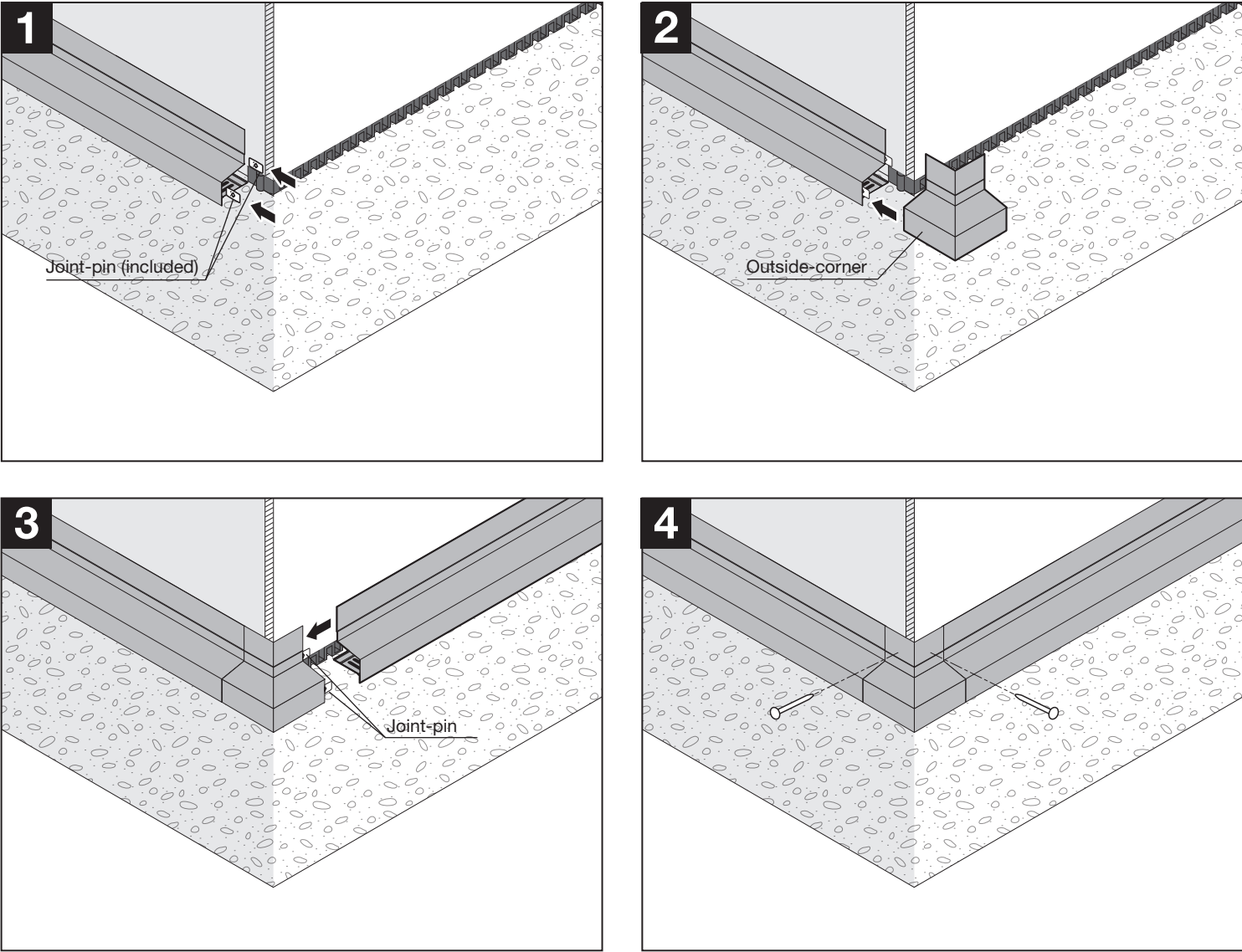
Endcap: install by using stainless-steel nails as shown in the illustrations.



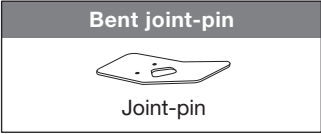
Inside-corner: connect by using joint-pins and install by using stainless-steel nails as shown in the illustrations.



Outside-corner: connect by using joint-pins and install by using stainless-steel nails as shown in the illustrations.

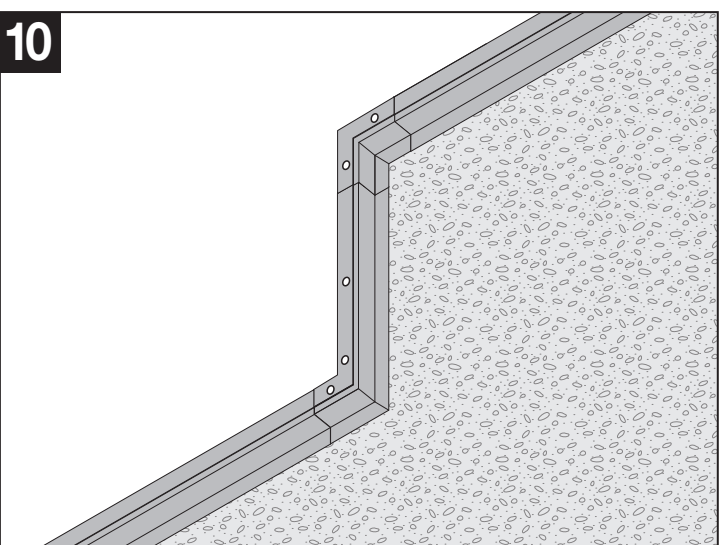
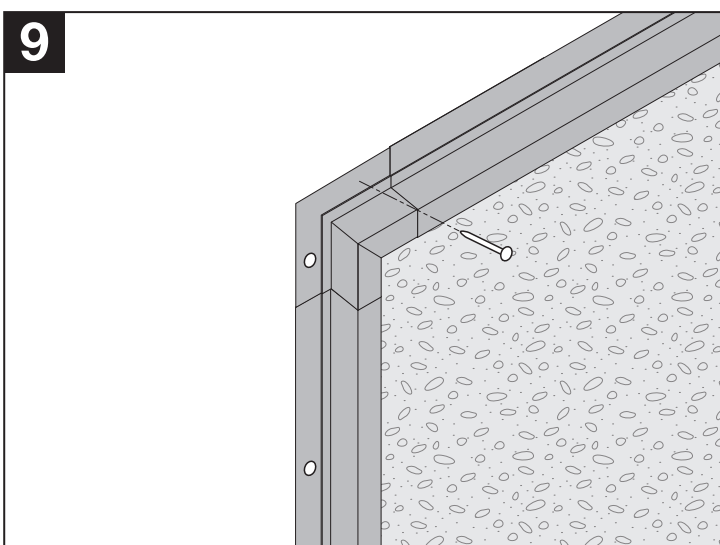
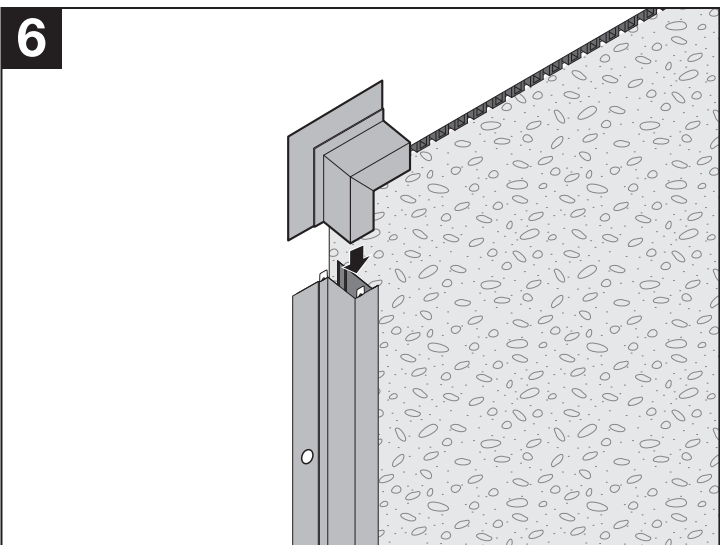
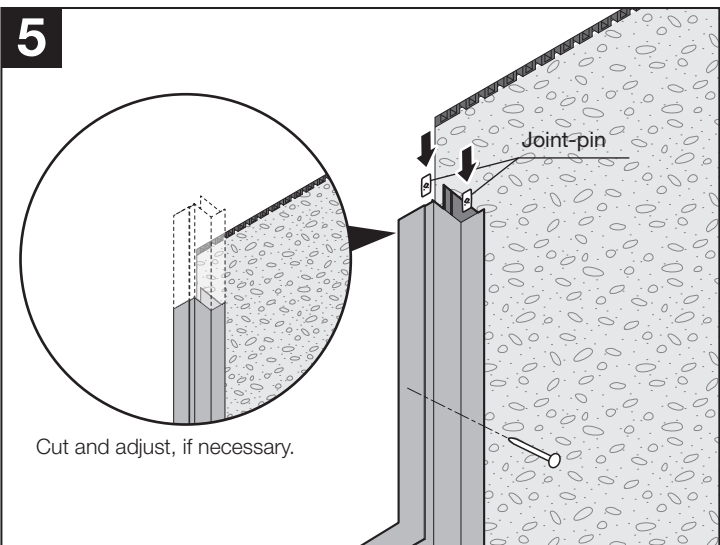
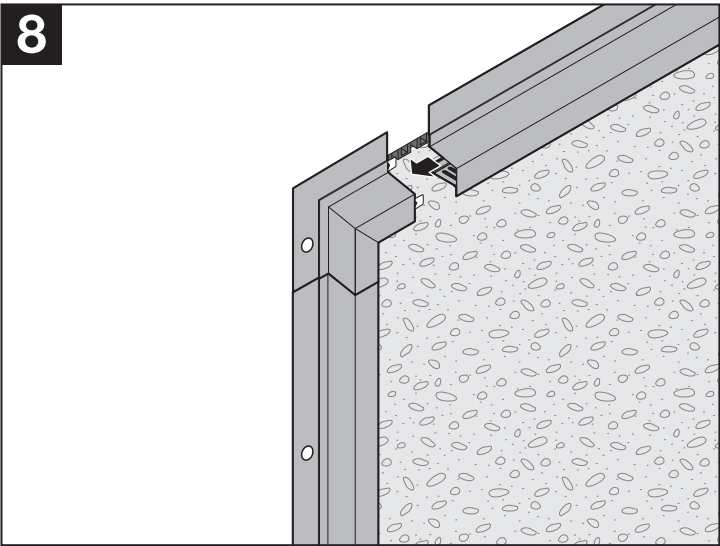
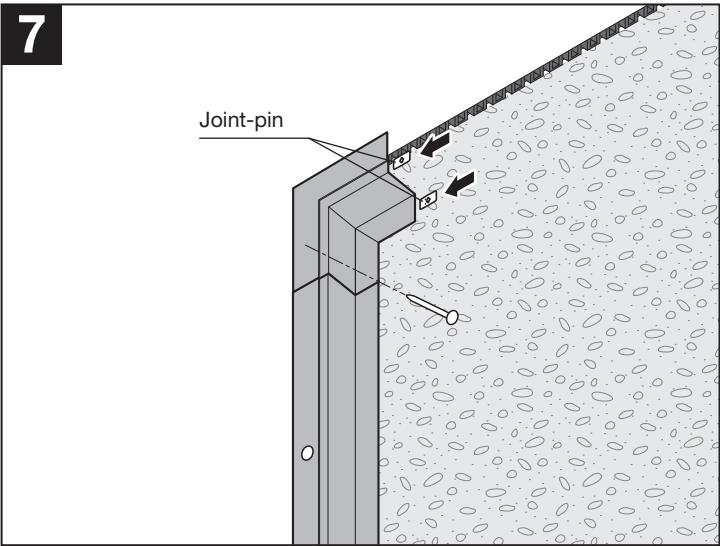
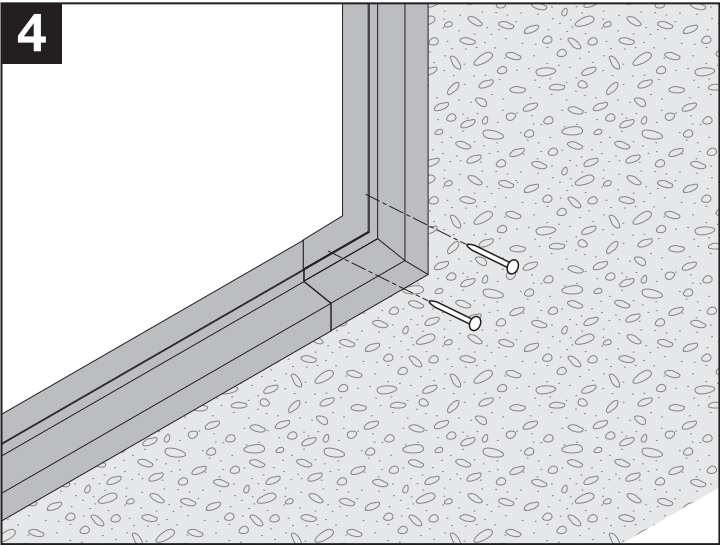
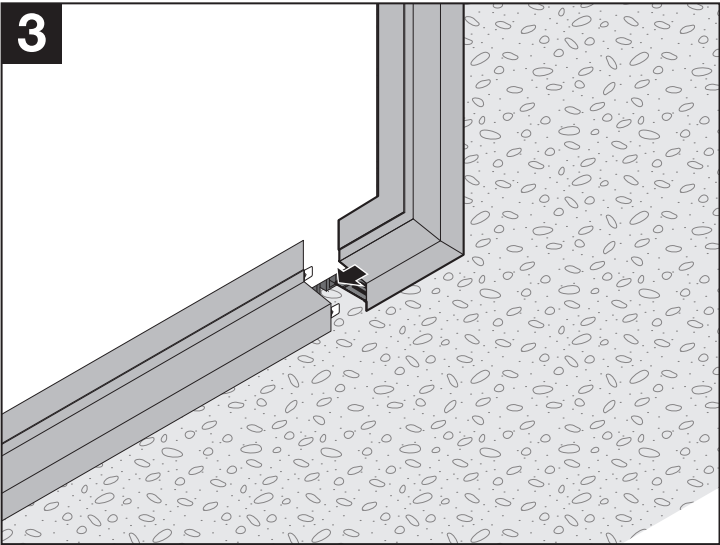
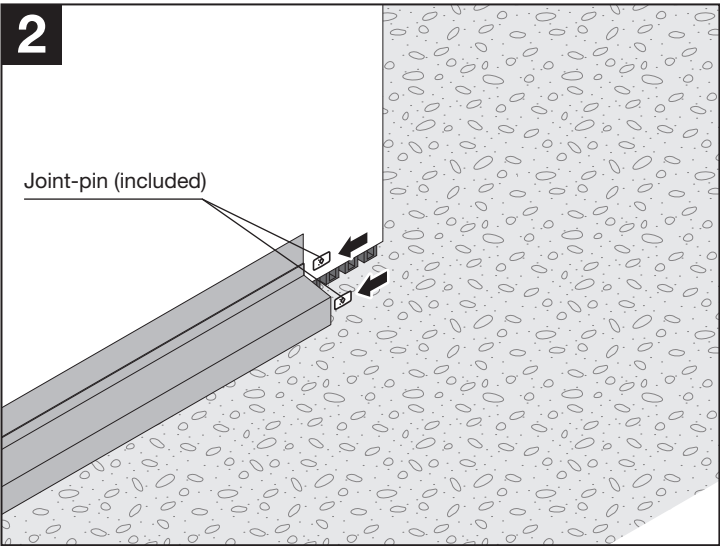
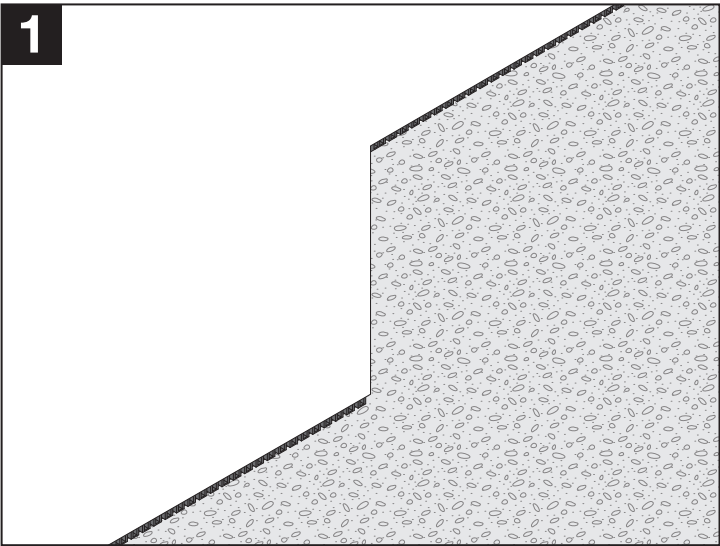


NOTICE



* When the joint-pin does not stop at the half way point, bend it on site and insert it again toward the direction in which it stops at the center. Remember half the joint pin must be in each piece of Premium-covering, to give a nice strong connection.

Vertical-corner: connect by using joint-pins and install by using stainless-steel nails as shown in the illustrations.



NOTICE

Bent joint-pin



Joint-pin

* When the joint-pin does not stop at the half way point, bend it on site and insert it again toward the direction in which it stops at the center. Remember half the joint pin must be in each piece of Premium-covering, to give a nice strong connection.