



Joto-Vent System[®]

Continuous Perimeter Foundation Vents

Installed in
5 million homes

AIA
Continuing
Education
Provider

ICC
ES[®]
ESR-4161



Architectural
Covering

Joto-Vent



Maintain the life of your home with the Joto-Vent System®

The Joto-Vent perimeter venting system and its covering offer an efficient and low-profile ventilation solution for your crawl space.



Get a Finished, Clean Architectural Look

The 2 part Joto-Vent System® includes the vent portion and the custom coverings that are installed over the vent, resulting in a clean visual look.



Support Natural Air Flow & Ventilation

Installed around the complete perimeter of the crawl space foundation, the Joto-Vent System® maximizes cross ventilation and natural air flow, preserving the lifespan of your home's wooden frame.



Maintain Your Home's Structural Integrity

The Joto-Vent System® eliminates the need for vent holes installed in the concrete foundation or cut into the structural framework of the rim joist maximizing the strength & performance of your home's structure.



Stanwood, WA

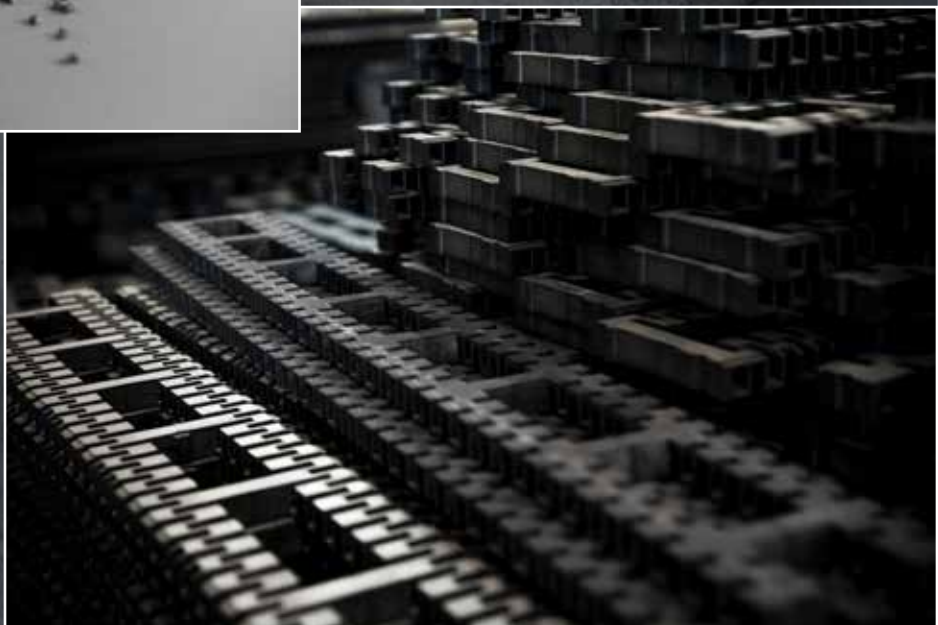
Joto-Vent System



The Joto-Vent is made of "JC (Joto-Compound)", a composite material that consists of calcium carbonate, polyolefin resin and recycled plastics.

JC was awarded manufacturing patents in the United States and several European countries as a recycled resin heat treatment system called "Joto-process".

Joto-Vent has an ultimate compression strength of over 56,000 pounds per lineal foot of Joto-Vent, and when you apply ICC-ES you can safely support 7,140 pounds per lineal foot of Joto-Vent. Wherever you trust a wooden sill plate, you can trust The Joto-Vent System.



The Joto-Vent System®

Crawl Space

Architectural Covering



The Joto-Vent Architectural Covering component is a molded galvanized steel plate conforming to ASTM A792 (JIS G3322). It acts as the cover for the Joto-Vent and the seat for the exterior wall sheathing. Pre-attached double-sided tape affixes the lower end of the exterior wall paper wrap.

Joto-Vent



The primary component of the Joto-Vent System is a molded calcium carbonate and polyolefin resin composite (JC). The Joto-Vent is placed between the concrete foundation wall (2 x 6 or 2 x 8) and the wooden sill plate to provide natural airflow around and through the entire perimeter of the home's crawl space. The ventilation opening area is 4.81 in²/ft (102 cm²/m).

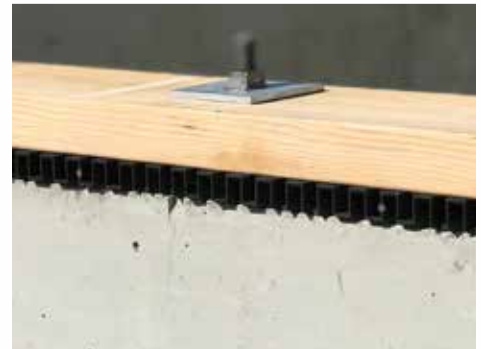
(Optional) Premium Covering



Premium Covering is an extruded 0.472" (1.2mm) aluminum covering conforming to ANSI H35.1. It acts as a cover for the Joto-Vent and a seat for the exterior wall sheathing.



Available in black and white





Slab (Garage)



(Optional) Reinforcement-block

The primary use is to provide more reinforcement against the compression point at the foundation where a heavy vertical load from a post is applied. Consult with a structural engineer for advice on how best to use the block.

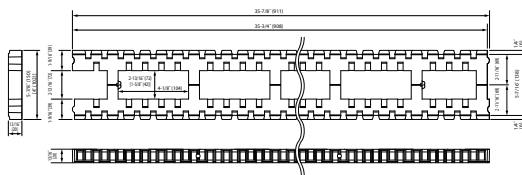


AIA
Continuing
Education
Provider

(Optional) Air-blocking For Garage / Entry / Slab-on-grade

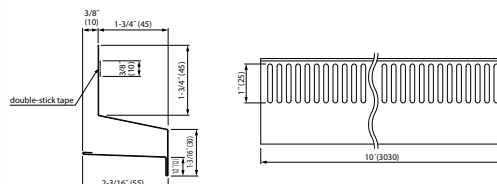
Air-blocking is an optional accessory for the Joto-Vent System which is used to create an air barrier between the garage and the crawl space. Use of Air-blocking also allows for continuous use of Joto-Vent and consistent height around the entire perimeter of the foundation, including areas that do not require ventilation.



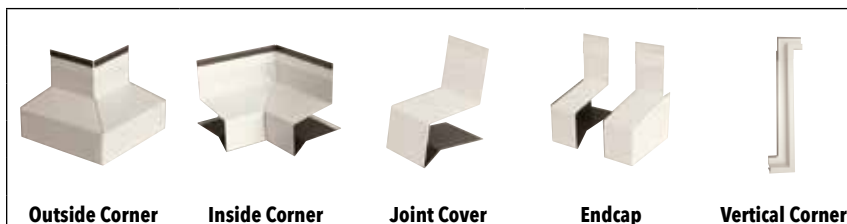
Joto-Vent (Net-Free Ventilation Area (NFVA): 4.81 in²/ft)**KP-L150U****TECHNICAL SPECIFICATION**

- **Ultimate compression load for Joto-Vent KP-L150U**
Approx. 168000 lb/piece (56000 plf*)
- **ICC-ES approved maximum allowable compression load for Joto-Vent KP-L150U**
7140 plf*
*plf = pounds per linear foot
- See our ICC-ES and IAPMO UES reports for details.

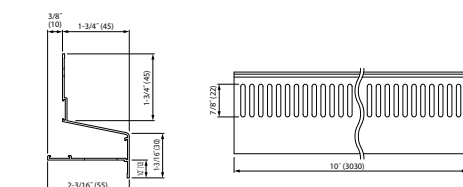
Product no.	KP-L150U
Sill plate	2 x 6, 2 x 8
Color/pattern	Black
Dimensions	6" x 3' x 3/4" (150 x 908 x 20mm)
Material	JC
Package	20 pieces/box

Architectural-covering**WACF-U45** (Net-Free Ventilation Area (NFVA): 5.73 in²/ft (121 cm²/m))

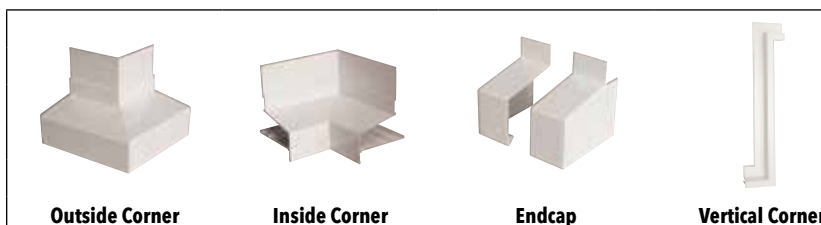
Product no.	WACF-U45-WT/BK
Dimensions	1-3/4" x 10' (45 x 3030mm)
Color	White/Black
Material	28-gauge galvanized steel (colored galvalume)
Package	10 pieces/box
Min ventilation opening	1/8 inch

Accessories**Outside Corner****Inside Corner****Joint Cover****Endcap****Vertical Corner**

	Product No	Package
Outside corner	WACF-U45CO-WT/BK	5 pieces/box
Inside corner	WACF-U45CI-WT/BK	5 pieces/box
Joint cover	WACF-U45JC-WT/BK	20 pieces/box
Endcap	WACF-U45EC-WT/BK	5 sets/box
Vertical corner	Right	WACF-U45VCR-WT/BK 10 sets/box
	Left	WACF-U45VCL-WT/BK 10 sets/box

(Optional) Premium-covering**WPCA-U45** (Net-Free Ventilation Area (NFVA): 5.73 in²/ft (121 cm²/m))

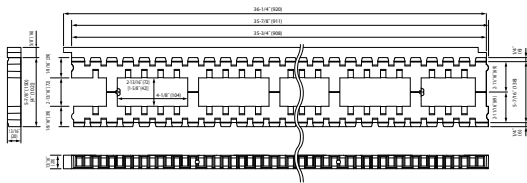
Product no.	WPCA-U45-WT
Dimensions	1-3/4" x 10' (45 x 3030mm)
Color	White
Material	17-gauge aluminum
Package	10 pieces/box
Min ventilation opening	1/8 inch

Accessories**Outside Corner****Inside Corner****Endcap****Vertical Corner**

	Product No	Package
Outside corner	WPCA-U45CO-WT	5 pieces/box
Inside corner	WPCA-U45CI-WT	5 pieces/box
Joint plate	WPCA-U45JP	40 pieces/box
Endcap	WPCA-U45EC-WT	5 sets/box
Vertical corner	Right	WPCA-U45VCR-WT 10 sets/box
	Left	WPCA-U45VCL-WT 10 sets/box

(Optional) **Air-blocking**

KPA-L150U



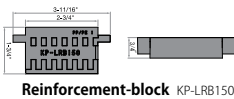
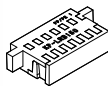
TECHNICAL SPECIFICATION

- **Ultimate compression load for Joto-Vent KP-L150U**
Approx. 168000 lb/piece (56000 plf*)

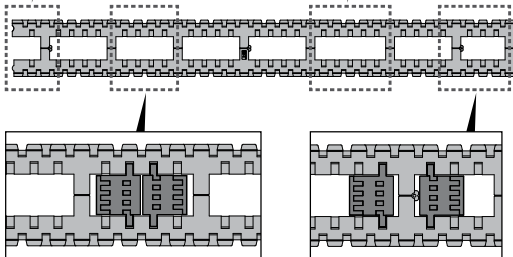
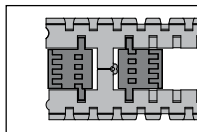
Product no.	KPA-L150U
Sill plate	2 x 6, 2 x 8
Color/pattern	Black
Dimensions	6-1/2" x 3' x 3/4" (166 x 908 x 20mm)
Material	JC
Package	20 pieces/box

(Optional) **Reinforcement-block**

KP-LRB150



Reinforcement-block KP-LRB150



Top side surface area --- KP-LRB150 : 4.96 sq.in (32.0cm2) /piece

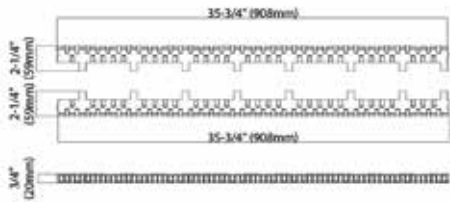
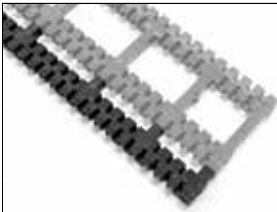
Product no.	KP-LRB150 Designed for use with KP-L150U
Color/pattern	Black
Dimensions	3-11/16" x 1-3/4" x 3/4"
Material	JC
Package	50 pieces/box
Allowable load per block	5,470 lbs*
Installation method	Install the products by placing them into the Joto-Vent (sold separately) that requires compression load reinforcement.

◀ **Sample layout drawings**

* Consult with a registered design professional for advice on how best to use the block.

(Optional) **Joto-Vent Extension Strip**

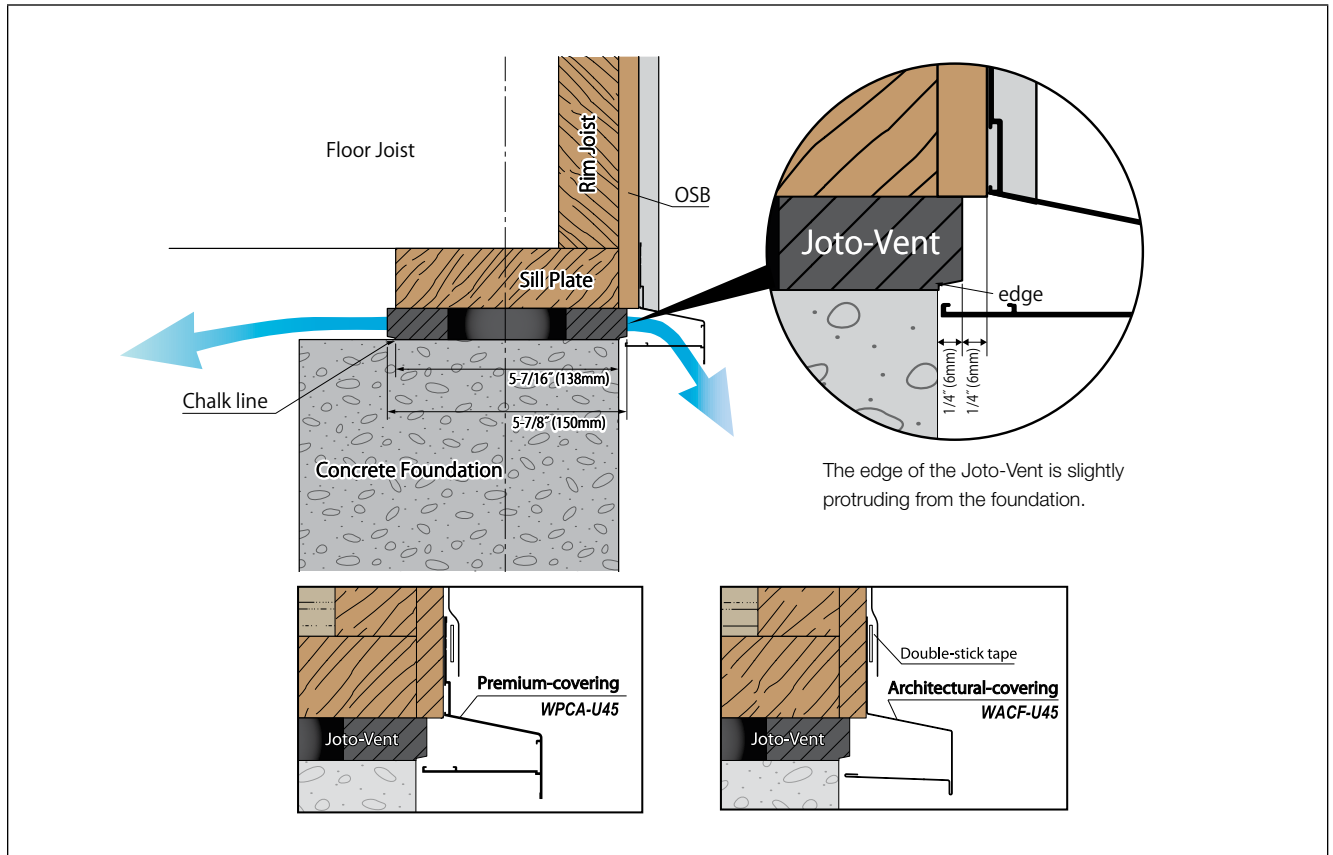
KP-L60UH



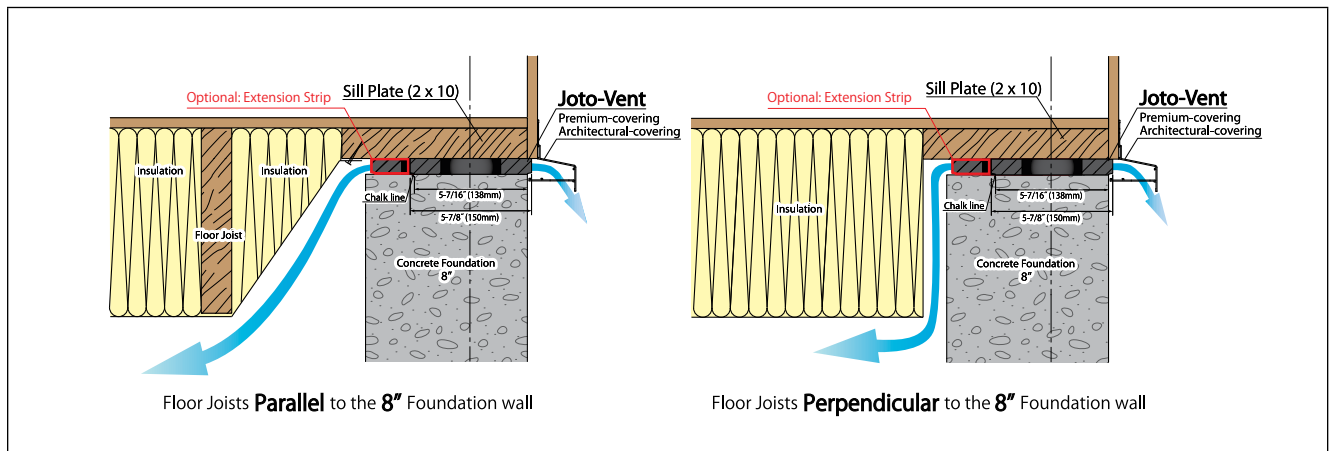
Product no.	KP-L60UH
Color/pattern	Black
Dimensions	2-1/4" x 3' x 3/4" (59 x 908 x 20mm)
Material	JC
Package	20 pieces/box

*The KP-L60UH Extension Strip is an optional accessory to be used with the KP-L150U to provide additional support on the interior side of 8" foundations using a 2x10 sill plate. This product is not currently certified or meant to be used as a structural member.

Installation Diagram



Reference diagrams for dropped floor applications



US SALES OFFICE OF JOTO TECHNO CO., LTD.



Joto-Vent System®
Innovative Building Materials USA, Inc.



17530 NE Union Hill Rd Suite 240
Redmond, WA 98052
Tel: 425-256-2210
Fax: 425-522-4804
Online: joto-vent.com
Email: info@jotovent.com